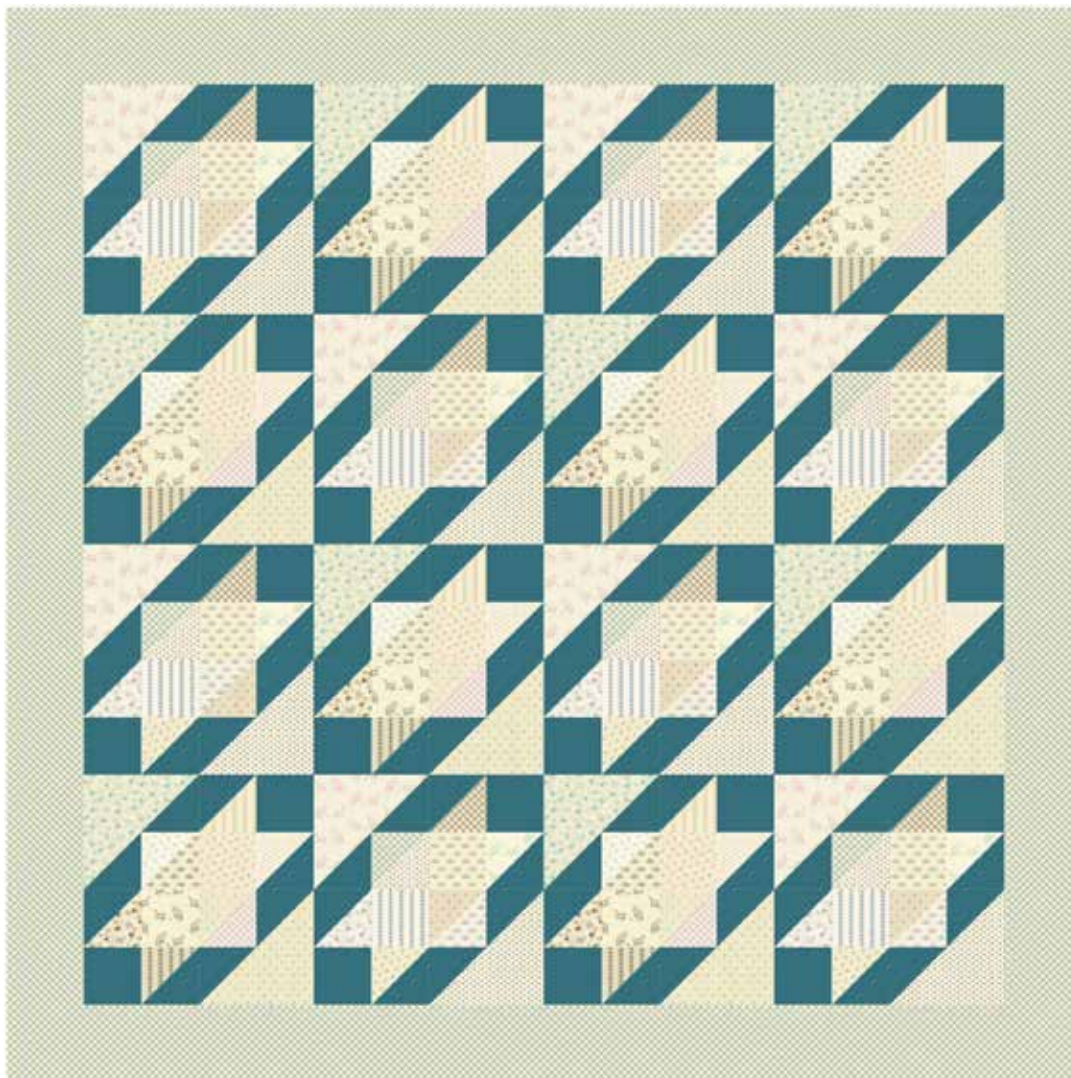


St. Leonard

MAX & LOUISE



100
years



Mountain Stars • Quilt designed by: **Max & Louise** • Quilt Size: **72" x 72"**

Skill Level: **Advanced Beginner** • andoverfabrics.com

andover • makower.uk

Free Pattern Download Available

1384 Broadway New York, NY 10018
Tel. (800) 223-5678 • andoverfabrics.com

Mountain Stars



Featuring Andover Fabrics new Collection: St. Leonard by Max & Louise

Quilt designed by Max & Louise

Quilt finished 72" x 72"

Quilt Cutting Directions

Note: Read assembly directions before cutting patches. Borders are cut to exact length required plus $\frac{1}{4}$ " seam allowance. WOF designates the width of fabric from selvedge to selvedge (approximately 42" wide).

Fabric A Cut a total of (16) $8\frac{7}{8}$ " squares, (64) $4\frac{7}{8}$ " squares and (32) $4\frac{1}{2}$ " squares. Cut the $8\frac{7}{8}$ " squares across (1) diagonal to make (32) $8\frac{7}{8}$ " triangles.

Fabric B Cut (4) $4\frac{7}{8}$ " x WOF strips. Sub-cut the strips into (32) $4\frac{7}{8}$ " squares. Cut the squares across (1) diagonal to make (64) $4\frac{7}{8}$ " triangles. Cut (4) $4\frac{7}{8}$ " x WOF strips. Sub-cut the strips into (32) $4\frac{7}{8}$ " squares. Cut (4) $4\frac{1}{2}$ " x WOF strips. Sub-cut the strips into (32) $4\frac{1}{2}$ " squares.

Fabric C Cut (4) $4\frac{1}{2}$ " x WOF strips. Sew the strips together end to end with diagonal seams and cut (2) $4\frac{1}{2}$ " x $64\frac{1}{2}$ " strips. Cut (4) $4\frac{1}{2}$ " x WOF strips. Sew the strips together end to end with diagonal seams and cut (2) $4\frac{1}{2}$ " x $72\frac{1}{2}$ " strips. Cut (8) $2\frac{1}{2}$ " x WOF strips for the binding.

Backing Cut (2) 80" x WOF strips. Sew the strips together and trim to make (1) 80" x 80" backing.

Note: Pay attention to the orientation of the units while assembling the various components.

Fabric Requirements

Quilt	Yardage	Fabric
Fabric A blocks	$\frac{1}{3}$ yard of ea.	215-E 215-G 215-N 216-B 216-L 216-N 217-B 217-E 217-N 218-B 218-K 218-N 219-E 219-P 219-Y 220-G 220-N 220-P 221-K 221-R 221-Y 222-B 222-G 222-R
Fabric B blocks	$1\frac{3}{4}$ yards	CS-10-Isle
Fabric C borders, binding	$1\frac{2}{3}$ yards	217-B
Backing backing	$4\frac{1}{2}$ yards	220-N

Making the Quilt

1. Block Assembly

Place (1) $4\frac{7}{8}$ " Fabric A square on top of (1) $4\frac{7}{8}$ " Fabric B square, right sides together. Draw a line across the diagonal of the top square (Diagram 1). Sew $\frac{1}{4}$ " away from each side of the drawn diagonal line (Diagram 1). Cut the (2) squares apart on the drawn diagonal line (Diagram 2) to make (2) half-square triangles. Trim the half-square triangles to measure $4\frac{1}{2}$ " square to make (2) Unit 1 squares (Diagram 3). Repeat to make (64) Unit 1 squares total.

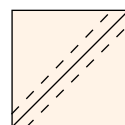


Diagram 1

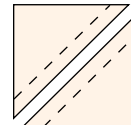


Diagram 2

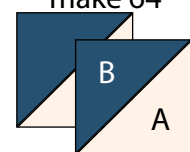
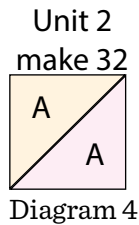


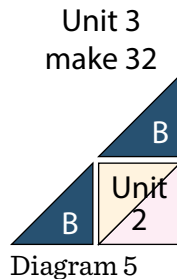
Diagram 3

Mountain Stars

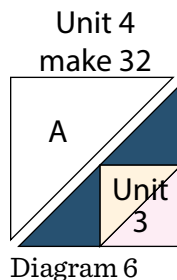
2. Repeat Step 1 and refer to Diagram 4 for fabric identification and placement while using (32) 4 7/8" Fabric A squares to make (32) Unit 2 squares.



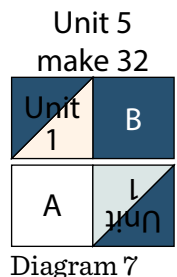
3. Sew (1) 4 7/8" Fabric B triangle to adjacent sides of (1) Unit 2 to make (1) Unit 3 triangle (Diagram 5). Repeat to make (32) Unit 3 triangles total.



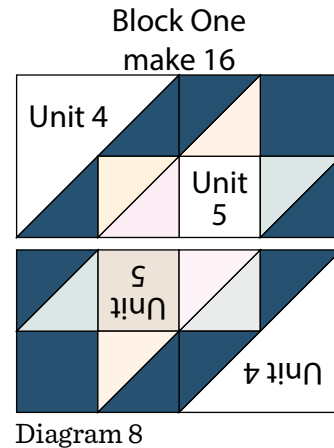
4. Sew (1) 8 7/8" Fabric A triangle to the long side of (1) Unit 3 triangle to make (1) 8 1/2" Unit 4 square (Diagram 6). Repeat to make (32) Unit 4 squares total.



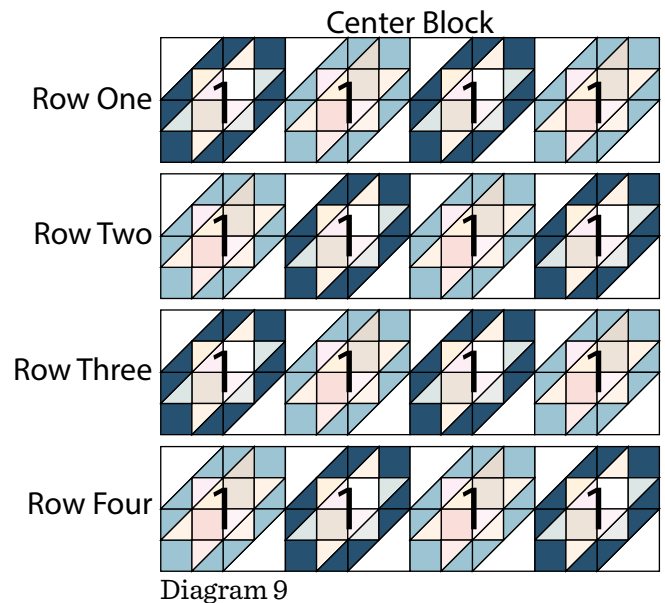
5. Sew (1) Unit 1 square to the left side of (1) 4 1/2" Fabric B square to make the top row. Sew (1) 4 1/2" Fabric A square to the left side of (1) Unit 1 square to make the bottom row. Sew together the (2) rows lengthwise to make (1) 8 1/2" Unit 5 square (Diagram 7). Repeat to make (32) Unit 5 squares total.



6. Sew (1) Unit 4 square to the left side of (1) Unit 5 square to make the top row. Sew (1) unit 5 square to the left side of (1) Unit 4 square to make the bottom row. Sew together the (2) rows lengthwise to make (1) 16 1/2" Block One square (Diagram 8). Repeat to make (16) Block One squares total.



7. Sew together (4) Block One squares to make Row One (Diagram 9). Repeat to make Row Two, Row Three and Row Four.
8. Sew together the (4) Rows from Step 7, in numerical order from top to bottom, to make the 64 1/2" x 64 1/2" Center Block (Diagram 9).



Mountain Stars

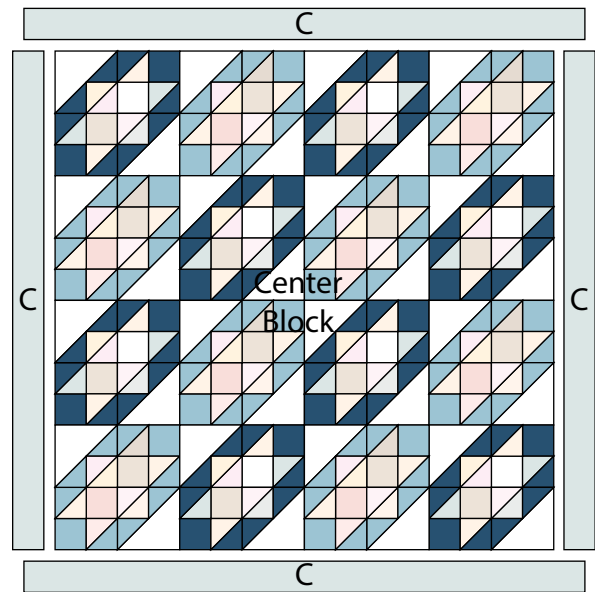
Quilt Top Assembly

(Refer to the Quilt Layout when assembling the quilt top.)

9. Sew (1) $4\frac{1}{2}$ " x $64\frac{1}{2}$ " Fabric C strip to each side of the Center Block. Sew (1) $4\frac{1}{2}$ " x $72\frac{1}{2}$ " Fabric C strip to the top and to the bottom of the Center Block to make the quilt top.

Finishing the Quilt

10. Layer and quilt as desired.
11. Sew the (8) Fabric C binding strips together, end to end with a 45-degree seams, to make the binding. Fold this long strip in half lengthwise with wrong sides together and press.
12. Bind as desired.



Quilt Layout

St. Leonard

MAX & LOUISE



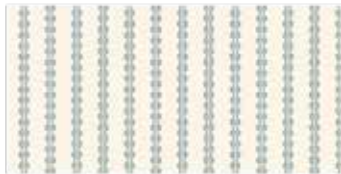
215-E 1/3 yd



215-G 1/3 yd



215-N 1/3 yd



216-B 1/3 yd



216-L 1/3 yd



216-N 1/3 yd



217-B 1 2/3 yds
(includes binding)



217-E 1/3 yd



217-N 1/3 yd



218-B 1/3 yd



218-K 1/3 yd



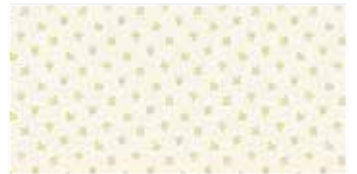
218-N 1/3 yd



219-E 1/3 yd



219-P 1/3 yd



219-Y 1/3 yd



220-G 1/3 yd



220-N 4 7/8 yds
(includes backing)



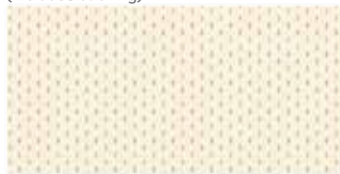
220-P 1/3 yd



221-K 1/3 yd



221-R 1/3 yd



221-Y 1/3 yd



222-B 1/3 yd



222-G 1/3 yd



222-R 1/3 yd

About Our Fabrics

A recognized leader in the quilting industry, Andover Fabrics features designs by a wide variety of talented artists and licenses, including Downton Abbey and Eric Carle's The Very Hungry Caterpillar. Catering to the tastes of creative and dedicated quilters, Andover has a style for everyone — authentic reproductions, romantic florals, modern and more.

Fabrics shown are 25% of actual size.

*Blend with fabrics
from Century Solids
from Andover Fabrics*



CS-10-Isle 1 3/4 yds

andover

•
• makower.uk
•

Free Pattern Download Available

1384 Broadway New York, NY 10018
Tel. (800) 223-5678 • andoverfabrics.com